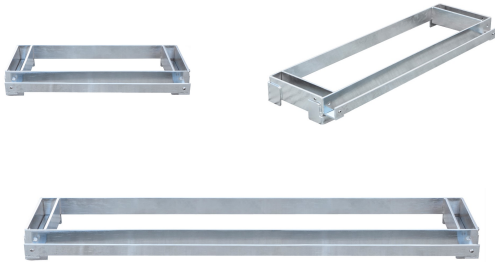


Griddle food pan rail

MATERIAL:

4.0mm304S/S construction

The rail mounts onto the front of most appropriately-sized griddles



MECHANICAL:

Great way to hold fractional food pans (sold separately) full of grilling utensil
sauce bottles

Seasoning shakers, breads, rolls, toppings, and garnishes

It works with 1/3, 1/6, and 1/9 size plastic or stainless steel food pans

Carton box packing

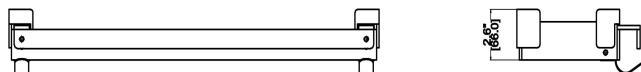
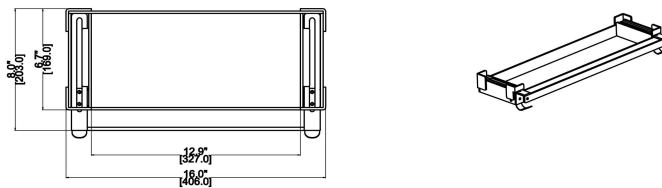
DIMENSIONS and SPECIFICATIONS

MODEL	SIZE	G.W.
17cengfpr-16	(8"-13")X16"X2-5/8"	9 lbs.
17cengfpr-24	(8"-13")X24"X2-5/8"	10 lbs.
17cengfpr-36	(8"-13")X36"X2-5/8"	12 lbs.
17cengfpr-48	(8"-13")X48"X2-5/8"	17 lbs.

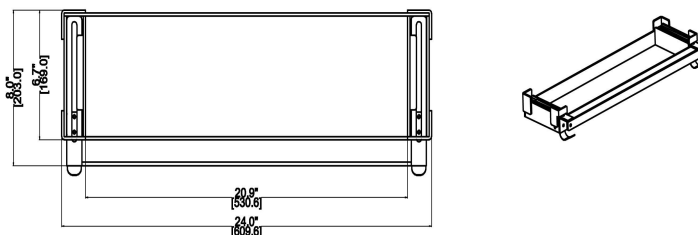
SPEC DRAWING:

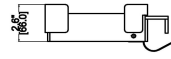
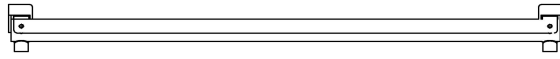


17cengfpr-16

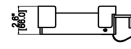
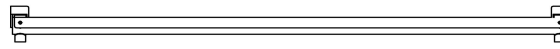
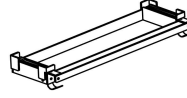
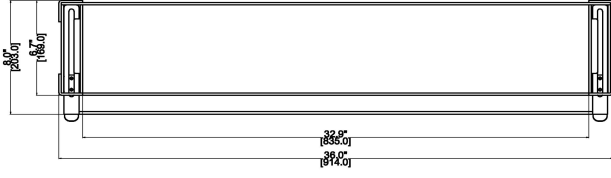


17cengfpr-24





17cengfpr-36



17cengfpr-48

